

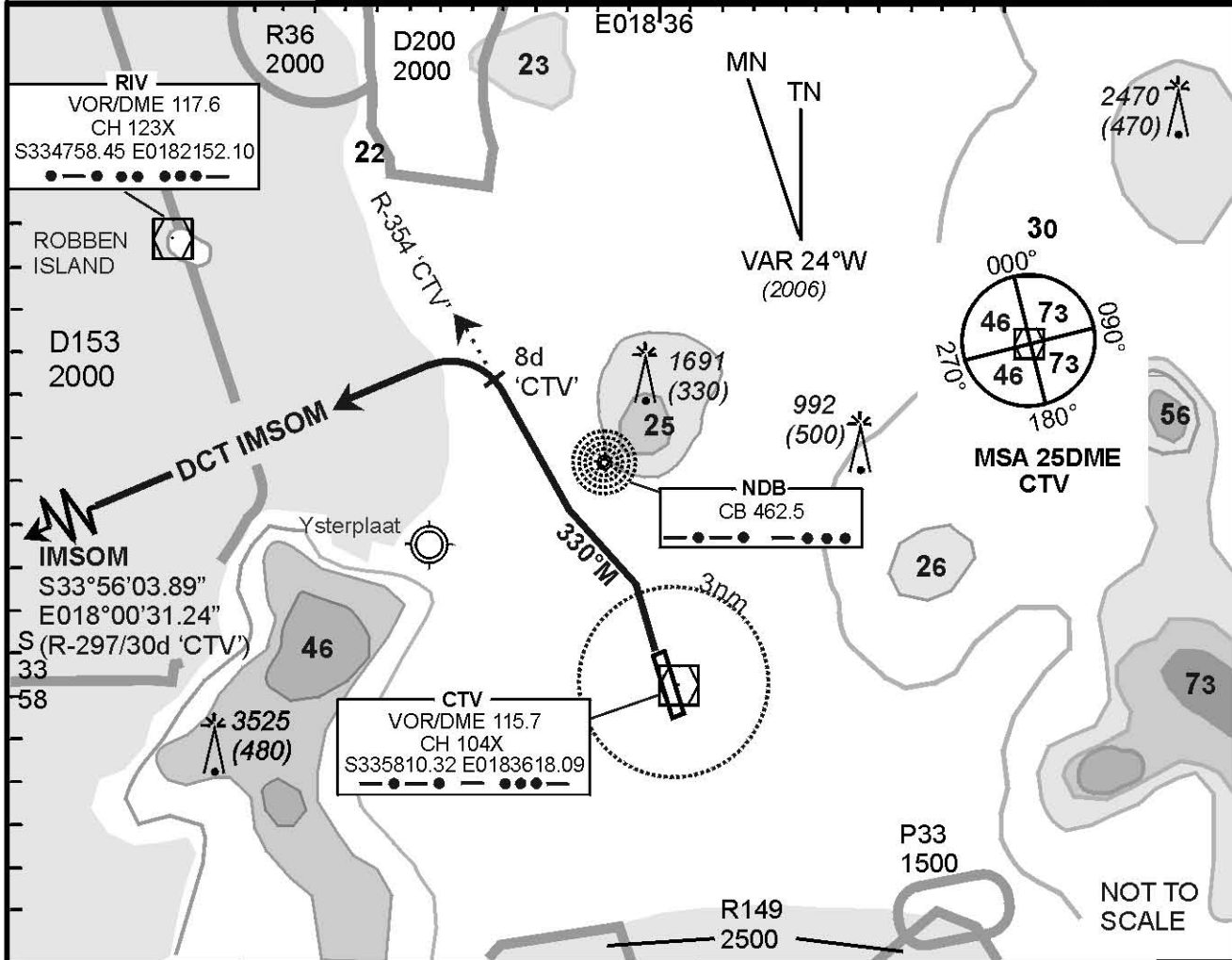
**STANDARD
DEPARTURE CHART
INSTRUMENT (SID)**

CAPE TOWN INTL

**RWY 01
IMSOM 1A**



Elev 151	T.alt 7500 T.lev ATC	Approach 119.7	Tower 118.1	ATIS 127.0	DEP-03
BEARINGS ARE MAGNETIC DIMENSIONS IN METRES ALTITUDES, ELEVATIONS AND HEIGHTS IN FEET. DISTANCES IN NM.					1. SIDS and STARS must be announced in operation on ATIS 2. SIDS and STARS will only be in force when Surveillance Radar is in operation 3. If unable to comply with SID or STAR, notify ATC
FACT					EFF 10 May 07



SID	RWY	Routeing (including Min Noise Routeing)
IMSOM 1A	01	Climb to FL 090, track RWY heading to 3DME 'CTV', then turn left to track 330°M to intercept R-354 'CTV' (outbound). Passing 8DME 'CTV' turn left direct IMSOM. Further climb will be under radar control. At IMSOM set course as per flight plan.
Comm Fail (Squawk 7600)		Comply with the IMSOM 1A SID, maintain last assigned level. At IMSOM continue as per flight plan and climb to flight plan level. Aircraft wishing to return must continue to the SID termination point at FL090, then proceed to ASPIK and comply with the ASPIK STAR Communication Failure procedure.

© AVDIRECT / 050107

CAA South Africa